

## SPECIFICATIONS

KTS-470RC			
<b>Distance Measurement</b>			
Max.Range	Single prism		5.0km
	Reflectorless		800m
	Reflector		1.0km
※Object in shade, or sky overcast			
Accuracy	Reflectorless	Fine	$\pm(3+2\text{ppm}\times D)$ mm
	Reflector	Fine	$\pm(2+2\text{ppm}\times D)$ mm
		IR sheet	
Reading	Max:99999999.9999m Min:0.1mm		
Measuring Time	Reflectorless	Fine Mode: <0.3s; Tracking Mode: <0.1s	
Atmospheric Correction	Manual Input, Auto Correction		
Prism Constant	Manual Input, Auto Correction		
Temperature Sensor	Freecale Sensor		
<b>Angle Measurement</b>			
Measuring Method	Absolute Continuous		
Dia. of Encoder Disk	79mm		
Minimum Reading	0.1"		
Accuracy	2" / 5"		
Detection Method	Horizontal: Dual, Vertical: Dual		
<b>OS and Hardware platform</b>			
Operate System	WINDOWS CE 6.0		
Display	3.5 inch. 640x480 Highlighted Touch Screen		
Data Communication	RS232, MINN USB, SD CARD		
Processor	Intel PXA310 806MHZ		
Memory	128M DDR, 512M NAND Flash		
Blue Tooth	30M range. Class 2, V2.0+EDR		
WiFi	Optional		
Power Control Processor	Auto Adjust Voltage and Frequency, Save energy		
<b>Telescope</b>			
Image	Erect		
Tube Length	154mm		
Effective Aperture	45mm,(EDM:50mm)		
Magnification	30x		
Field of View	1° 30'		
Minimum Focus Distance	1m		
Resolving Power	3"		
<b>Auto Compensator</b>			
System	Dual Axis Liquid-electric		
Working Range	$\pm 3'$		
Accuracy	1"		
<b>Vial</b>			
Plate Vial	30"/ 2mm		
Circular Vial	8/ 2mm		
<b>Optical Plummet</b>			
Image	Erect		
Magnification	3x		
Focusing Range	1m - $\infty$		
Field of View	5°		
<b>On-Board Battery</b>			
Type	Rechargeable Li-ion Battery		
Voltage	DC 6V		
Continuous Operation Time	10 hrs		
<b>Others</b>			
Temperature	-20 ~ +50C		
Dimension and Weight	200x190x350mm, 6.0kg		
Plummet	Optical or Laser Plummet Optional		

## STANDARD CONFIGURATION



1. Mainframe 1x
2. Rechargeable Battery 2x
3. Battery Charger 1x
4. Communication Cable 1x
5. Mini USB Cable 1x
6. SD Card 1x
7. Tools Kit 1x
8. Dryer 1x
9. Plummet 1x
10. Carrying Case 1x
11. Operation Manual 1x
12. Software CD 1x
13. Warranty Card 1x
14. QC Pass Certificate 1x
15. Rain Cover 1x
16. Belt for Case 2x

### USB Communication Cables



KE-290

### Battery and Charger



KB-35A KC-20

EU/US/JP/UK/UL Type chargers available

## COMPATIBLE ACCESSORIES



Solar Filter  
KF-20

Diagonal Eyepiece  
KDE20



Best choice, Brightest price

# KOLIDA

Smaller Size  
Increased Performance



## KTS-470RC SERIES

### WinCE TOTAL STATION

**KOLIDA**  
KOLIDA INSTRUMENT

**GUANGDONG KOLIDA INSTRUMENT CO., LTD.**

Add: 2/F, Surveying & Mapping Building (He Tian Building), NO.24-26, Ke Yun Road, Guangzhou 510665, China  
Tel: +86-20-85542075 Fax: +86-20-85542136  
E-mail: export@kolidainstrument.com http://www.kolidainstrument.com

# WinCE TOTAL STATION KTS-470RC SERIES

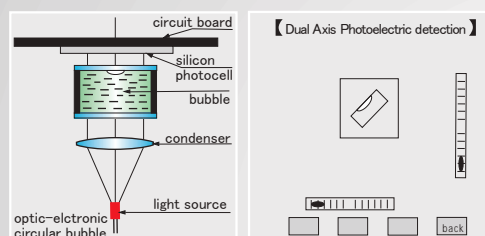
## Windows CE Operating System

You can use computer, then you can use our KTS-470RC total station. Regardless of your profession, no experience needed. From simple tasks to professional all-day use, enjoy the benefits of simplicity and functionality with KTS-470RC.



## Dual-axis Compensation

With advanced electronic compensators, KTS-470RC can level and correct collimation errors quickly. Dual-axis compensation on KTS-470RC can assure you the maximum reliability with both horizontal and vertical angles.



## Complete Flexibility in Communications

Provide you full flexibility in data handling by SD card, mini USB, RS232 port, Bluetooth (optional). You can choose your favorite communication method, to restore and transfer data quickly, securely.



RS232 serial port



Temperature Sensor



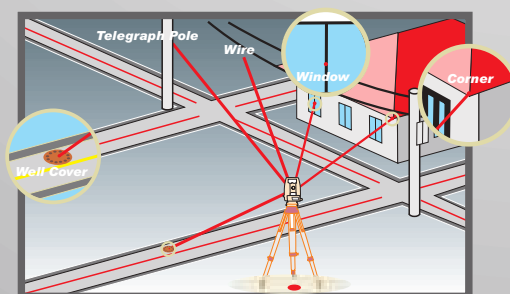
USB port and SD card



Bluetooth (optional)

## Non-prism Distance Measurement

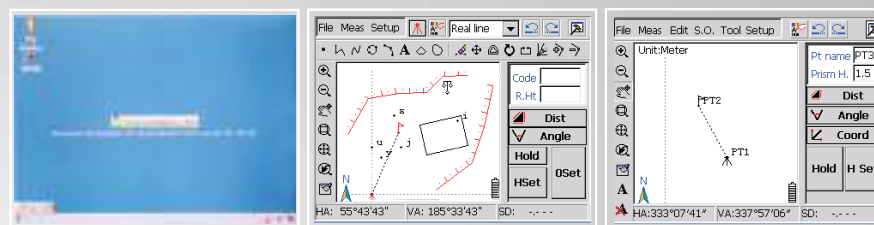
Non-prism Range 800m, Prism 5km-10km. Better stability, shorter time. KOLIDA 470RC maximize your working efficiency.



# THE ADVANTAGE OF KOLIDA TOTAL STATION

## LCD Touch-screen, Graphic Display

Larger, highly visible, smart LCD touch screen allows you to view and edit data with ease. Just work the way you want, show the data in graphic display.



Mapping Genius

Engineering Genius



## Multiple Assistant Software

### Mapping Genius

Mapping Genius is an integrated software for field data collection and mapping. With the advantages of Laptop, data collector, PDA, it realizes the integration of indoor and outdoor works.

### Engineering Genius

Engineering Genius is especially designed for construction measurement works. It brings user data collection/ calculation and mapping programs which can be applied in various works.

## Support to work with both SurvCE and Field Genius

### Carlson SurvCE (coming soon)

Carlson SurvCE, a user-friendly fieldwork solution to meet diverse needs. Provides comprehensive data manipulation but no experience needs, combines advanced functionality with easy-to-use interface, support landXML points, DTM, graphics, alignments, profiles and sections. (Need to purchase individually)



### MicroSurvey Field Genius (coming soon)

MicroSurvey Field Genius is survey data collection software, functions with code-free linework, productivity tasks, better calculation tools and hardware freedom of choice. (Need to purchase individually)

